

# Moses Tan

## *borrowed intimacies*

1 December 2020 to 8 January 2021

Yavuz Gallery Singapore is pleased to present Singaporean-artist Moses Tan in *borrowed intimacies*.

*Bated breaths of delectation,  
Inaudible whispers filtered through the leaves.*

*As petals fall upon sweat-stained bodies,  
Faces lit by the crescent above.*

*Like werewolves turning,  
Bodies hunched,  
Seeking prey through the dense foliage.  
Waiting.*

*Hushed propositions,  
Quiet dispositions,*

*Steps*

*hurrying*

*behind*

*closed doors.*

*Bated breaths of delectation,  
Inaudible whispers filtered through the sheets.*

*As shadows fall upon sweat-stained bodies,  
Faces lit by a bedside lamp.*

*Irises shifting,  
Conversations silent,  
Heavy in thoughts and inarticulate desires.  
Anticipating.*

*The lions bond. The snakes intertwine.*

*Bodies fall in disarray,  
Intimacies borrowed,*

*As the penetrable closet finds its host.*

## YAVUZ GALLERY

SINGAPORE | 9 Lock Road, #02-23, Singapore 108937 | tel: +65 6734 3262  
SYDNEY | 86 George Street, Redfern, NSW 2016 Australia | +61 (2) 8040 8838  
info@yavuzgallery.com | www.yavuzgallery.com

*borrowed intimacies* is a presentation of new works examining various layers surrounding queerness, failure, allegory and intimacy. Using the oft-used bedroom as a starting inspiration point, the works occupy an installation wherein the public and private meld. The glass case, a metaphor for the closet, litters the space where audiences are invited to partake in the intimacy afforded by various sites and locales. A waft of quiet melancholia permeates the space as one intuits it affectively.

A combination of drawings, clay objects and video, the works intermingle in various disarrays. Hidden meanings take over articulative language, orientations take over text, and objects function as desires. The inability to articulate manifests in different forms, from visual to textural, auditory, and experiential.

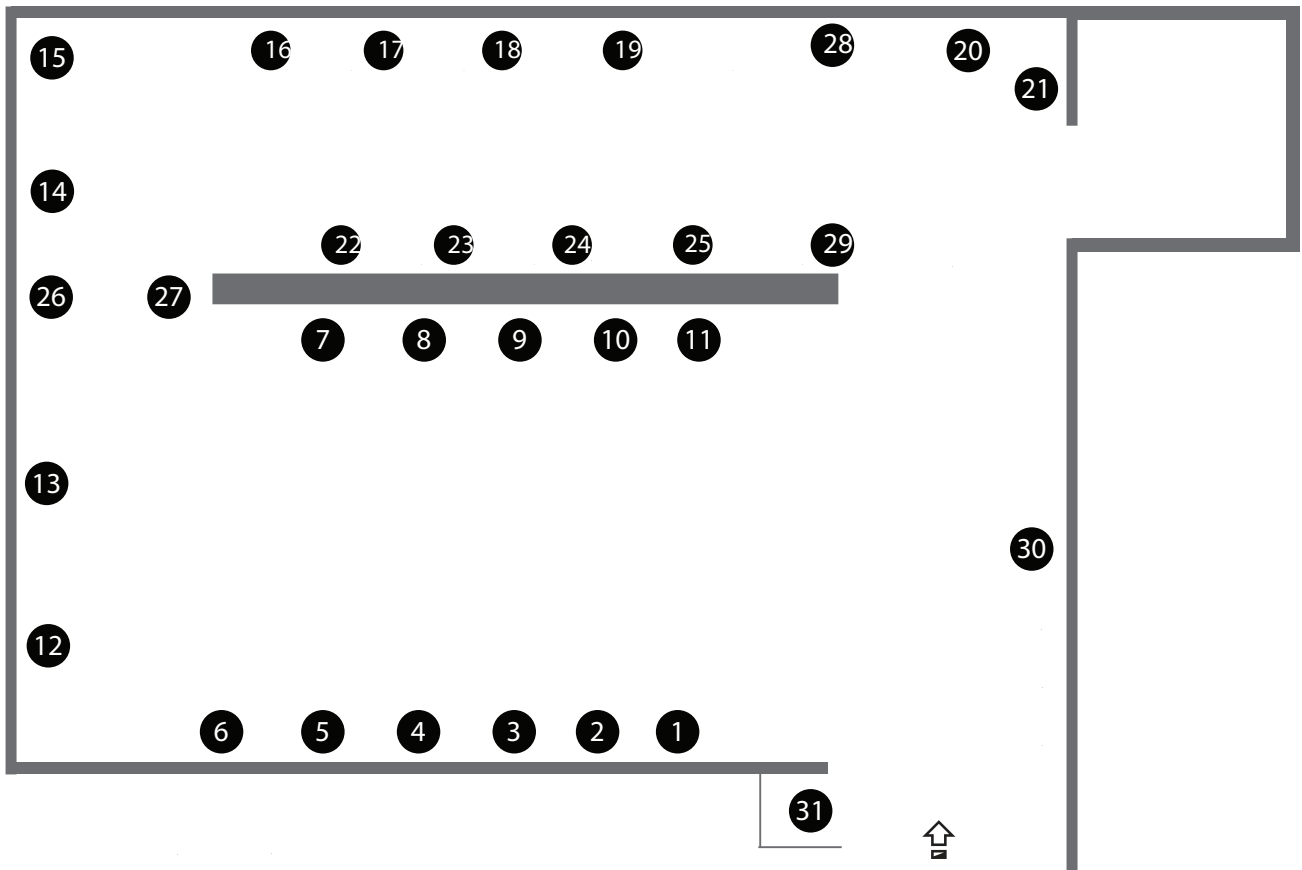
## **ABOUT THE ARTIST**

Moses Tan (b. 1986) is a Singapore-based artist whose work explores histories that intersect with queer theory and politics while looking at melancholia and shame as points of departure. Working with drawing, video and installation, his interest lies in the use of subtlety and codes in the articulation of narratives. He graduated from LASALLE College of the Arts with a BA(Hons) in Fine Arts and a BA(Hons) in Chemistry and Biological Chemistry from Nanyang Technological University.

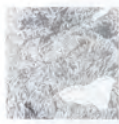
He was awarded the Noise Singapore Award for Art and Design in 2014, Winston Oh Travel Research Grant in 2016, and the LASALLE Award for Academic Excellence in 2016. He has exhibited across Singapore, Hong Kong, Australia, amongst others, including at spaces such as Grey Projects (Singapore), 4A Centre for Contemporary Asian Art (Australia), Hidden Space (Hong Kong), Indiana University (USA), Kunst Im Dialog (Germany). In 2018, Tan completed the Equal Justice Residency at Sante Fe Art Institute (USA).

## **YAVUZ GALLERY**

SINGAPORE | 9 Lock Road, #02-23, Singapore 108937 | tel: +65 6734 3262  
SYDNEY | 86 George Street, Redfern, NSW 2016 Australia | +61 (2) 8040 8838  
info@yavuzgallery.com | www.yavuzgallery.com



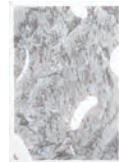
**1) The penetrable closet**  
2020  
Graphite on gesso hardboard  
canvas  
15 x 10.5 cm



**2) Suspicious activity 1**  
2020  
Graphite on gesso hardboard  
canvas  
15 x 15 cm



**3) Careless whispers**  
2020  
Graphite on gesso hardboard  
canvas  
15 x 10.5 cm



**4) Suspicious activity 3**  
2020  
Graphite on gesso hardboard  
canvas  
17.7 x 12.5 cm



**5) Careless whistles**  
2020  
Graphite on gesso hardboard  
canvas  
30.9 x 23.1 x 5 cm



**6) The woods, the woods**  
2020  
Graphite on gesso hardboard  
canvas  
13 x 18 cm



**7) The woods we curl in**  
2020  
Graphite on gesso hardboard  
canvas  
15 x 10.5 cm



**8) Suspicious activity 2**  
2020  
Graphite on gesso hardboard  
canvas  
15 x 10.5 cm



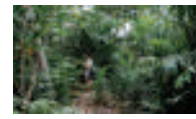
**9) When do we ask, of what  
home will be?**  
2020  
Graphite on gesso hardboard  
canvas  
15 x 10.5 cm



**10) Friendly Fire**  
2020  
Graphite on gesso hardboard  
canvas  
15 x 15 cm



**11) Suspicious activity 5**  
2020  
Graphite on gesso hardboard  
canvas  
20.3 x 25.3 cm



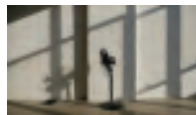
**12) Unfounded intimacies**  
2020  
Video, colour, audio  
1920 x 1080  
Editions of 5  
3' 51"



**13) Suspicious activity 4**  
2020  
Graphite on gesso hardboard  
canvas  
45.5 x 30.5 cm



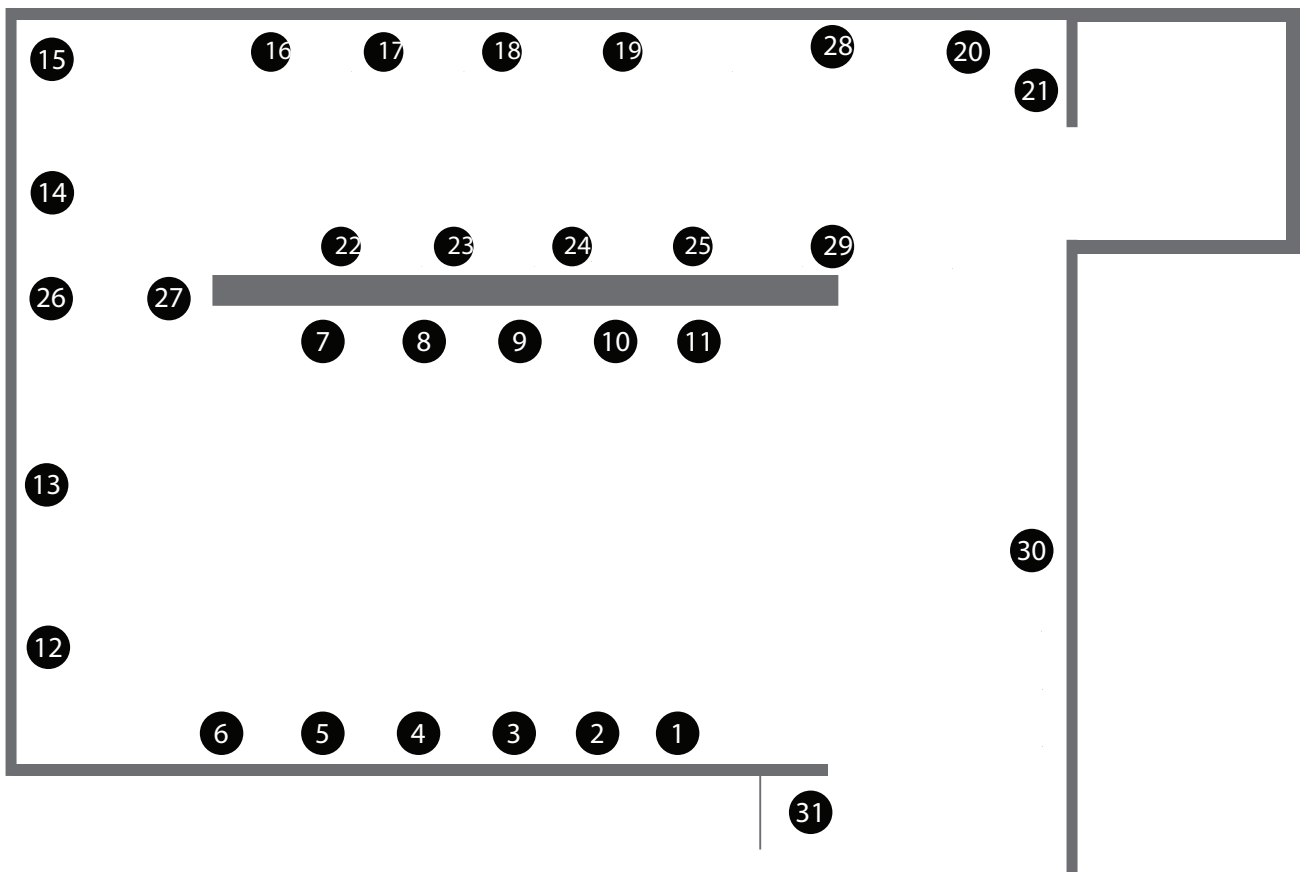
**14) The inarticulate fool**  
2020  
Graphite on gesso hardboard  
canvas  
15 x 10.5 cm



**15) OnlyFans**  
2020  
Video, colour, audio  
1920 x 1080  
Editions of 5  
3' 52"



**20) Finding solace**  
2020  
Graphite and charcoal on  
gesso hardboard canvas  
15 x 10.5 cm



**26) Unholy objects**  
2020  
Polymer clay, chains, glass box, synthetic pearl, stainless steel earring  
Dimensions variable



**16) Unholy objects #16**  
2020  
Polymer clay, glass box



**22) One more try?**  
2020  
Graphite on wood  
15 x 15 cm



**27) Unholy objects**  
2020  
Polymer clay, chains, glass box, synthetic pearl, stainless steel earring  
Dimensions variable



**17) Gathering of whispers**  
2020  
Graphite on gesso hardboard canvas  
15 x 10.5 cm



**23) Two, one, two**  
2020  
Graphite on gesso hardboard canvas  
15 x 10.5 cm



**28) Unholy objects**  
2020  
Polymer clay, chains, glass box, synthetic pearl, stainless steel earring  
Dimensions variable



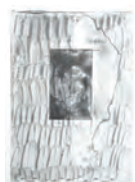
**18) Unholy objects #18**  
2020  
Polymer clay, chain, glass box



**24) Unholy object #17**  
2020  
Polymer clay



**29) Unholy objects**  
2020  
Polymer clay, chains, glass box, synthetic pearl, stainless steel earring  
Dimensions variable



**19) Veritable oust**  
2020  
Graphite on gesso hardboard canvas  
17.7 x 12.5 cm



**25) Garden of carnal delights**  
2020  
Graphite on wood  
20.5 x 25 cm



**30) Quiet dispositions**  
2020  
light box



**21) The odd one**  
2020  
Polymer clay and drawing



**31) Longing, waiting, pining**  
2020  
Graphite on watercolour paper (framed)  
58.5 x 39.5 cm (artwork size)  
22 x 30 (drawing parts)